

## Using the MetaTrader4 Strategy Tester by [SecretsFromTheHeart.com](http://SecretsFromTheHeart.com)

### Setting the 'Max Bars in History' and Max Bars in Chart'

Go to the labels at the top of your MT4 platform and click on TOOLS, then OPTIONS, then on the CHARTS tab. Insert a value of 512000 or greater in both of the boxes Max Bars in History and Max Bars in Chart. This will allow more data to be saved in your platform History Center.

### Verify Data is loaded into the MT4 platform

For more accurate results you will need to make sure the MetaTrader platform has the data loaded in for the currency pair and timeframe you will be using. We will run our testing on the USD/JPY using the 15 minute chart as a sample.

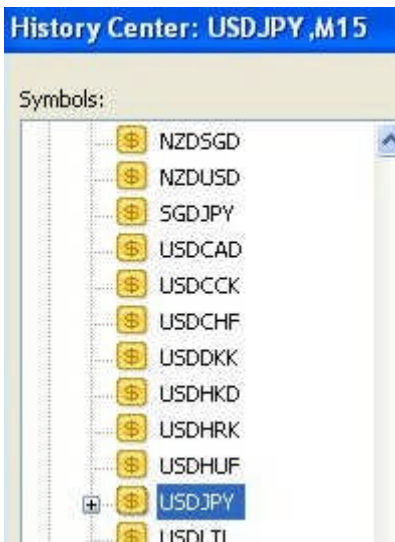
At the top of the MetaTrader Platform, click on 'Tools', then 'History Center'.



Expand the Forex folder by clicking on the + sign.



Then double click on the pair USDJPY,



and when that expands, double click on 15 Minutes. Also double click on the 5 Minutes and 1 Minute entries to load in that data too. You will need to be sure all data is loaded up to the timeframe you are testing on.



Close the box to exit.

**Note** - Another way to load data into the History Center, different than above is from the chart and using the 'Page Up' button to scroll data backward. This will load the data into the History Center.

## Running the Strategy Tester

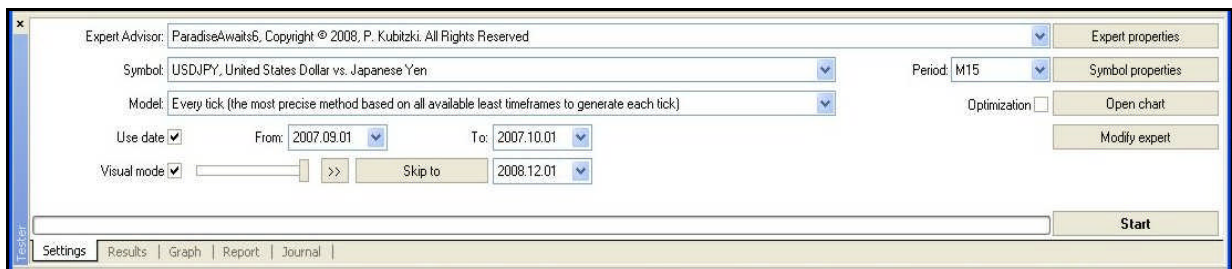
Test on a platform that has no open live or demo trades. Start by disabling Experts Advisors at the top of the MT4 platform, there should be a red circle to denote EAs are not active to live trade.



Go to 'View' / 'Strategy Tester' to bring up the Strategy Tester.  
On the 'Expert Advisor' line select the EA you will be testing.  
On the 'Symbol' line select the currency pair you will be testing.  
On 'Model' elect 'Every Tick' for the most accurate results.

Be sure 'Period' is set to the timeframe, which would match the chart timeframe you would run the EA on.

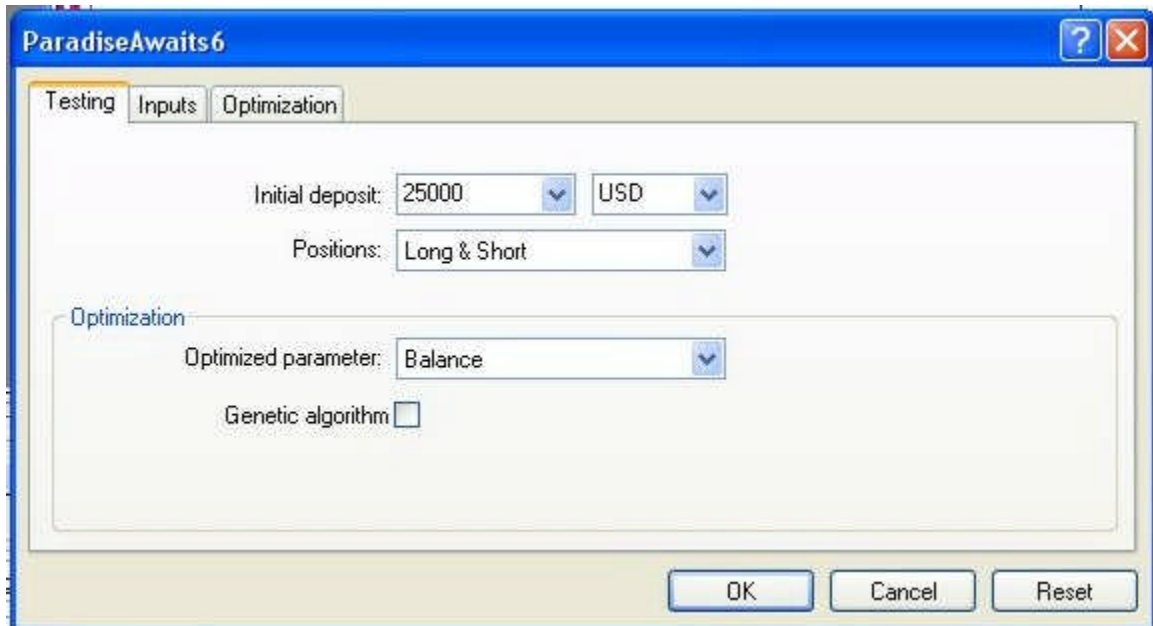
Also be sure 'Use Date' is checked and select the dates to start and end the run. If you don't need to see the trades on the chart or read the chart comments then Visual Mode does not need to be checked. The testing will go faster without it.



Now click on 'Expert Properties' so we can enter the settings on the Inputs Tab.

Enter the settings that you want the tester to use or Load a pre-saved Set file.

Next, click on the 'Testing' tab and set the 'Initial Deposit' to 25000 or the amount desired.



Click 'OK' to close the box.

Then click 'Start' to start the Strategy Tester.

Remember the Strategy Tester is not live market activity, only historical data, so there is no problem with broker fills, spread variation or slippage.